

TABLE OF CONTENTS

Introduction.....	2
Aerosols.....	3-6
Bearings.....	7
Chemicals.....	8-11
Cutting Tools & Abrasives	12-15
Electrical Fittings.....	16
High Strength Fasteners.....	17-18
Hoses & Fittings.....	19-20
Tools.....	21-26
Welding Supplies.....	27-28
Suppliers.....	29

INTRODUCTION

KIMMAR DISTRIBUTORS has been owned and operated by Gary Huggins since 1990. In 2018, Gary's son, Marcus joined him in the business and together, they are known for supplying high quality industrial grade maintenance products to withstand the toughest applications. With multiple years of hands-on experience in maintenance, Gary and Marcus apply their knowledge to supply quality products for lasting results.

These products are designed for and used in industries such as automotive, heavy equipment, hotel maintenance, metal fabrication, aircraft maintenance, marine and more. Supplying everything you need for all your repairs, whether its preventative maintenance or bringing old or broken-down machinery back to life.

As a mobile operation we come to you. We can help you to manage your inventory by keeping it stocked and organized helping to reduce time spent at stores looking for parts and therefore reducing time on repairs.

This guide outlines some of our most popular products with descriptions for their intended use. Please note that our product line is **NOT** limited to what is in this guide. We have a vast selection of items to offer, and we are always willing to help you find the right product for the job.

AEROSOLS

Heavy Duty Chain Lubricant

- ✓ Specially formulated lubricant for all chain and chain drive equipment.
- ✓ Heavy-Duty Chain Lubricant penetrates chain links and bushings to prevent chain wear and chain slippage.
- ✓ Contains Extreme Pressure (EP) additives – ideal for gear boxes.



Duty Master

- ✓ Open gear lubricant.
- ✓ Prevents dry starts, gear chatter and premature wear by adhering and lubricating in wet conditions – even under water.
- ✓ Highly adhesive, so it won't sling off.
- ✓ Fortified with molybdenum disulfide to maintain protection even under extreme pressure.
- ✓ All-temperature protection from -20°F to +525°F (-29°C to +275°C)



Fifth Wheel Lube

- ✓ Formulated specifically for on-the-spot lubrication of truck fifth wheels and consistent performance under all weather conditions.
- ✓ Special additives prevent squeezing out under loads up to 40,000 lbs.
- ✓ Additive package prevents rust and corrosion.
- ✓ Temperature range 20°F to 175°F



LPA II

- ✓ General purpose lubricant.
- ✓ Corrosion inhibitor.
- ✓ Can be used on all finished metallic surfaces.
- ✓ Protects machinery, engines, tools both indoor and outdoor.
- ✓ Displaces water.
- ✓ Safe on plastics.



LPA III

- ✓ Forms a heavy wax coating long-lasting barrier against harmful atmospheric and chemical environments.
- ✓ Safe to use on plastic, rubber and painted surfaces.
- ✓ 360° valve that allows spraying from any direction...even upside-down.



Pene-Grease

- ✓ High pressure synthetic grease.
- ✓ Resistant to water wash out.
- ✓ Sprays like a penetrating oil and sets to a long last grease.



E.P. Oil

- ✓ Clinging foam formula sticks on surfaces, penetrating between moving parts and remaining in place even under pressure. It is an ideal way to seal out moisture and prevent rust and corrosion over the long-term.
- ✓ Contains no CFCs, HCFCs or chlorinated solvents.
- ✓ 20 oz. can size; 15.75 oz. net wt.



Blue Grease Aerosol

- ✓ High-performance, calcium-sulfonate based grease for general industrial maintenance applications.
- ✓ Extremely resistant to water washout, will not break down under heavy load applications.
- ✓ Wide temperature range: 0°F to 500°F (-7°C to +260°C)
- ✓ Applications - mechanical hoists, conveyor systems, anti-friction bearings, exposed gears and drives.



Termin-8R

- ✓ High dielectric insulates against corrosion.
- ✓ Can be applied to control panels, circuit boards, switches, and electric motors.
- ✓ Eliminates problems caused by atmospheric moisture and its resulting corrosion.
- ✓ In many cases, has revived parts previously immersed in salt water.
- ✓ Quickly loosens frozen or seized parts.
- ✓ Invades hard-to-reach crevices and creeps through the tightest seams.
- ✓ Displaces moisture.
- ✓ Forms a protective "Thin Film" barrier to stop oxidization and prevent rust from spreading.
- ✓ Dissolve's corrosion oxide — stops rust on contact!
- ✓ Penetrates metal surfaces including all horizontal and perimeter seams for long lasting protection.
- ✓ Protects all types of vehicles and equipment both on and off the road.



Repel

- ✓ Penetrates and displaces moisture quickly. A thin film protects electrical equipment against power drain and current leakage caused by moisture.
- ✓ Dries out damp electrical equipment and reconditions water-damaged equipment.
- ✓ Non-conductive dielectric strength of 39,500V per 0.1" for safe use on electrical equipment



Rusty

- ✓ Fast-acting penetrant for tough rust and corrosion.
- ✓ Quickly frees rusted parts.
- ✓ Penetrates heaviest rust via capillary action.
- ✓ Avoids torch use – chemical additives break the bonds between metal and corrosion.
- ✓ Speeds repairs – extension tube reaches inaccessible areas.
- ✓ No CFCs, silicone, or chlorinated solvents



Open & Shut

- ✓ High-performance penetrating oil.
- ✓ Cleans, lubricates, protects, and displaces water.
- ✓ For working in damp, dirty, greasy conditions, or near ignition sources.
- ✓ Penetrates easily through water, rust, and grime to provide lubrication to loosen nuts and bolts.
- ✓ Non-flammable
- ✓ High dielectric strength: 39,500V
- ✓ Body shop approved
- ✓ Quickly wicks
- ✓ Continually lubricates
- ✓ Frees rusts and grime quickly from bolts



Power Off Plus

- ✓ Electrical contact cleaner.
- ✓ Low VOC formula designed for use on electrical circuits and equipment that are not energized.
- ✓ Powerful flushing action lifts stubborn dirt, grease, oil, and corrosion buildups, restoring electrical system performance.
- ✓ Evaporates quickly, leaving no residue.
- ✓ Safe on most plastics
- ✓ Restores conductivity.
- ✓ Not for use on energized circuits



Electric Varniseal

- ✓ Insulating spray that protects electrical and electronic components.
- ✓ dries quickly to a tough flexible film and provides high adhesion and high arc resistance.
- ✓ Resistant to oil, moisture, acid, alkalis, and other industrial contaminants
- ✓ Dielectric Strength: 1,000V/mil thickness when dry.
- ✓ Dry Time: 20 minutes tack-free; 30-60 minutes hard
- ✓ Standard: Meets Class F insulation specification



On-Guard

- ✓ Anti-corrosion coating
- ✓ Seals metals against moisture, oxygen, salt spray and other corrosive materials.
- ✓ Ideal for long term corrosion protection for stored metal parts and equipment.



Brake Cleaner

- ✓ Is a fast efficient way to clean and degrease all brake parts, either disc or drum.
- ✓ Cleans brake pads, and C.V. Joints.
- ✓ Powerful spray removes oil and grease without disassembling the brake unit.
- ✓ Stops disc brake squeal when caused by contaminants.



Carb Cleaner

- ✓ Acts instantly on gum and varnish deposits, dissolving and removing them to the bare metal in seconds.
- ✓ Serves as an excellent penetrate sliding surfaces.
- ✓ Unclogs, cleans, and frees up automatic chokes, manifold heat controls, and carburetor linkage and gaskets.



BEARINGS

Timken is a leading authority on tapered roller bearings, with deep knowledge of metallurgy, tribology and mechanical systems to improve the reliability and efficiency of equipment, machinery and vehicles worldwide.

Timken's engineered bearings feature precision tolerances, proprietary internal geometries and quality materials. Their tapered, spherical, cylindrical, thrust, ball, plain, miniature, precision and housed unit bearings deliver strong performance consistently and reliably.



We offer several different types of bearings for various applications:

- ✓ Ball bearings
- ✓ Cylindrical bearings
- ✓ Spherical Roller bearings
- ✓ Pillow block/housed bearings
- ✓ Precision bearings
- ✓ Plain Bearings
- ✓ Tapered Roller bearings
- ✓ Thrust Bearings
- ✓ Bearing Seals

We stock a large variety of bearings and can supply for special applications. If you are not sure of what you need, we can help with identifying the correct bearing for your application.



CHEMICALS

Lubri-Temp

- ✓ Anti-seize
- ✓ Prevents metal-to-metal seizing, galling, and sticking in stainless steel and petrochemical applications.
- ✓ Excellent water washout resistance which is ideal for food manufacturing environments.
- ✓ Provides a protective coating for highly corrosive environments.
- ✓ Special blend of synthetic oil and solids ensures resistance to decomposition and oxidation.
- ✓ Not recommended for high-speed, close tolerance bearing applications.
- ✓ Available in aerosol, 1lbs and 5lbs tubs.



Purple Blaster

- ✓ Degreaser
- ✓ Engines
- ✓ Greases
- ✓ Tires
- ✓ Oil spills
- ✓ Tools
- ✓ Biodegradable and environmentally friendly.



Vehicle Maintenance

- ✓ Engine Oils
- ✓ Car Wash
- ✓ Protectants
- ✓ Coolants
- ✓ AC Freon
- ✓ Windshield Washer Fluid



LRC Rust converter

- ✓ Converts rusty surface to corrosion-resistant compound.
- ✓ Surface can be painted with most commercial paints without a primer.
- ✓ Touch dry in 20 minutes, full cure in 24 hours
- ✓ Available in gallons or quarts.
- ✓ Passes ASTM 500-hour salt spray test.



Joe's Hand Scrub

- ✓ Designed to clean without harsh acids or alkalis.
- ✓ Works with or without water
- ✓ Natural pumice scrubbers provide effective cleaning without damaging skin.
- ✓ Cleans and conditions without leaving skin feeling greasy.



Purple Blaster Hand Cleaner

- ✓ Petroleum solvent-free
- ✓ Environmentally safe
- ✓ Effectively dissolves grease, grime, oil, lubricants, paints, tar, inks and more.
- ✓ Contains antimicrobial agent.
- ✓ Natural citrus/orange oils safely and effectively dissolve tough soils.



Blue Grease HT

- ✓ General industrial grease designed for applications involving high heat, water, extreme pressure, and high loads.
- ✓ Will not separate, soften or run-in applications involving heavy loads.
- ✓ Resists washout from water or steam
- ✓ NLGI Grade 1-1/2 covers applications requiring a NLGI 1 or 2 grease.
- ✓ Wide temperature range: 0°F to 554°F (-18°C to +290°C)
- ✓ Calcium sulfonate complex base
- ✓ Dropping point (ASTM D-2265): 554°F (290°C)
- ✓ Water washout (ASTM D-1264): 2.8% loss at 175°F (80°C)
- ✓ Four ball wear (ASTM D-2266): 0.45mm scar dia.
- ✓ Mobility: 13.6g/minute at 0°F (18°C)
- ✓ Timken OK Load (ASTM D-2509): 65 lbs.
- ✓ Bearing rust test (ASTM D-1743): Pass
- ✓ Applications include outdoor equipment and machinery, bearings, mechanical hoists, water pumps and generators, forklifts, exposed gears and drives, fifth wheel and universal joints.



Super 77 Moly Grease

- ✓ Formulated with molybdenum disulfide, a high-temperature, non-melting additive.
- ✓ Ideal grease for applications involving extremely high load and elevated temperatures.
- ✓ Molybdenum disulfide and graphite additives improve anti-friction properties.
- ✓ Contains antioxidant and anti-rust additives.
- ✓ Applications include plain bearings, sliding surface bearings, couplings, mechanical linkages, pumps, U-joints, sprockets, gears, and conveyors where high temperatures and heavy loads may be encountered.



Lube EP Multipurpose Sulfonate Grease

- ✓ Extreme pressure additives and molybdenum provide excellent lubrication properties.
- ✓ Highly resistant to water and can be used with plain, sliding, and anti-friction (ball and roller) bearings.
- ✓ Calcium sulfonate grease with oxidation inhibitors and extreme pressure additives for severe applications
- ✓ Protects surfaces against corrosion and resulting seizing from fresh or salt water.
- ✓ Suitable for high-speed bearings and centralized lubrication systems
- ✓ Outstanding film strength
- ✓ Thickeners: Calcium sulfonate
- ✓ Dropping point: 550°F (288°C)
- ✓ Temperature range: -20°F to +500°F (-29°C to +260°C)
- ✓ Timken OK load: 65 lbs.
- ✓ Wheel bearing leakage: 5.0g max.
- ✓ Four ball weld load: 620kg



Marine Grease

- ✓ Superior rust and corrosion
- ✓ Protection from salt water, salt air and atmospheric chemicals. Special
- ✓ Water-insoluble formula recommended for corrosive applications.
- ✓ High load carrying ability, excellent resistance to
- ✓ Water, oxidation and corrosion, and outstanding performance in a wide
- ✓ temperature range



ETP Gold

- ✓ Cutting fluid
- ✓ Enhance the quality of cutting work while significantly increasing tool life with ETP Gold.
- ✓ Controlled viscosity formula clings to the workpiece for superior lubrication, even under extreme pressure.
- ✓ Works well with most metals including aluminum, titanium, and stainless steel.
- ✓ Semi-synthetic formula cleans up with water.
- ✓ Cannot be beat for tapping, cutting, reaming, and drilling.
- ✓ Comes in a squeeze bottle or aerosol foam with all-position spray valve.
- ✓ Can be cut with water for local cutting fluid systems – when mixing with water, a maximum ratio of four parts water to one-part fluid is recommended.



Cool Head 1

- ✓ Highly concentrated, water-soluble coolant for cutting, grinding and general machining of multiple types of metal alloys.
- ✓ Formulated with rust inhibitors.
- ✓ For use on ferrous metals, aluminum, nickel titanium alloys, copper, and brass
- ✓ Dilutes 1:20 to 1:40 for grinding and 1:10 to 1:30 for general-purpose machining.



Nix and Nix Fresh

- ✓ Odor eliminator
- ✓ A combination of liquid live bacteria and biological enzymes that immediately eat the sources of odor and convert them to carbon dioxide and water. Gentle on fabrics and ideal for removing odors from upholstery and carpets.
- ✓ Available in two formulas – Nix is fragrance-free; Nix Fresh has a light, fresh fragrance.
- ✓ Can be diluted 25 oz. per gal. (1:5), depending on the application.
- ✓ Recommended for odor control in drain lines, portable toilets, septic tanks, sump pumps, wet wells, grease traps and any area where odor buildup occurs.



Acrysol Paint Preparation and Auto Body Solvent

- ✓ Won't damage most painted or plastic surfaces – always spot-test first
- ✓ Virgin solvent formula leaves no residue
- ✓ Fast acting
- ✓ Fast flash formula – no lingering solvent odor
- ✓ No chlorinated solvents or CFCs



Third Power Multipurpose Cleaner/Degreaser

- ✓ Water-based cleaner and degreaser.
- ✓ Strong yet safe for the environment.
- ✓ Unscented and toxin free
- ✓ Biodegradable – contains no greenhouse gas compounds
- ✓ Applications - floors, walls, countertops, tiled surfaces, appliances, ovens, vents
- ✓ Manufacturing applications – machinery, workstations, concrete floors, cabinets, toolboxes, parts washers



CUTTING TOOLS & ABRASIVES

Our superior cutting tools make the job much easier. These industrial grade tools cut through the toughest applications and are long lasting with the right care.

Hacksaw & Reciprocating Saw Blades

- ✓ Made in USA.
- ✓ Variable Pitch
- ✓ Teeth vary in size, spacing, gullet depth and number of teeth per inch along the whole length of the blade.
- ✓ Allows each tooth to enter the workpiece at a different cutting angle than the tooth before it, cutting into the workpiece underneath the cut made by the previous tooth, which makes for better chip formation. This allows you to cut faster and results in a smooth-cut finish.
- ✓ Less friction results in less heat buildup, particularly when cutting materials such as stainless steel that tend to work-harden easily.
- ✓ Each variable pitch blade size can cut a wider range of thicknesses, materials and shapes than straight pitch blades – reducing time required for blade changes.
- ✓ Bi-Metal Construction
- ✓ A matrix alloy tool steel cutting edge is electronically welded to an alloy spring steel back.
- ✓ Cuts tough materials up to Rc 45, yet remains shatterproof.
- ✓ Can be tensioned to 30,000 PSI in a Hardflex® frame for greater performance.
- ✓ Withstands heavy feed pressures, side pressures and shocks without stripping teeth.
- ✓ Resists fatigue due to high friction cutting temperatures.
- ✓ Teeth stay sharper longer.



Supertanium Drill Bits

- ✓ 135° modified split point for easy starts – eliminates center punching, pilot hole drilling and walking.
- ✓ Specially designed deep flutes provide superior chip removal, reducing heat buildup and chip clogging for easier drilling and longer tool life.
- ✓ Heavy-duty tapered web greatly reduces drill “chatter” and breaking, providing greater strength and rigidity.
- ✓ Precision ground cutting edges extend drill bit life, stay sharper longer, and can be resharpened.
- ✓ Manufactured from top-quality, high-speed steel for reduced breakage and chipping.
- ✓ The reinforced point and cutting edges require less pressure to drill resulting in longer tool life, more holes drilled, and reduced cost.
- ✓ Drill size equals the shank size.
- ✓ Made in USA.
- ✓ For tough and deep hole drilling applications.
- ✓ Outstanding results on stainless steel, aluminum, cast iron, brass and other metals.
- ✓ Can be used for hand and production drilling on large equipment.
- ✓ Available in kits or individual.



Carbide Cutters

- ✓ Precision tools made from metallurgically inspected tungsten carbide blanks and steel shanks.
- ✓ Sectional end cuts provide usable flutes on all our burs with end cuts.
- ✓ Hydrogen atmosphere brazed-on shanks.
- ✓ Available in different shapes, sizes, and kits.



Regency Taps

- ✓ Precision-ground thread design performs better in controlled machine set-ups and tougher off-hand maintenance applications.
- ✓ Gold oxide finish enhances chip flow.
- ✓ Minimizes seizing and binding.
- ✓ Requires less torque.
- ✓ Produces a more accurate hole.
- ✓ Sizes permanently marked on all taps.
- ✓ Manufactured from high-speed steel.
- ✓ Wear-resistant.
- ✓ Used in general tapping operations of ferrous and non-ferrous materials.
- ✓ CAUTION: Any cutting tool may break or shatter under improper use.



Regency Dies

- ✓ Stamped with size.
- ✓ Highest-quality carbon tool steel.
- ✓ Outlasts carbon dies 10-to-1.
- ✓ Professional quality.
- ✓ Black and gold finish.
- ✓ Designed especially for cleaning dirty or rusty threads, and for restoring damaged threads to correct form and lead.



Supertanium Files

- ✓ Specially treated black oxide coating reduces loading of soft materials, prolongs tooth sharpness and tool life, and resists rusting.
- ✓ Precision cut for uniform tooth height and sharpness
- ✓ Scientifically heat-treated for maximum hardness and edge-holding ability
- ✓ Unique cleaning process to eliminate grit and grime normally found in the bottom (gullets) of file teeth – eliminates excess clogging for faster filing.



Lathe Bits

- ✓ Micrograin carbide combines the strength of high-speed steel with the hardness and wear resistance of carbide. Its high degree of shock resistance safeguards against chipping or breaking under normal conditions.
- ✓ Micrograin carbide handles interrupted cuts even on welds and flame-cut material. It also allows for greatly increased speeds and feeds in high-strength, thermal-resistant alloys.
- ✓ Effective in machining high-temperature high-strength alloys, work-hardened stainless steels, and hard materials
- ✓ Made in USA.
- ✓ For general-purpose grooving, turning, facing, and chamfering.
- ✓ An exceptional choice for many difficult machining applications traditionally not suited for standard carbide tool bits. These include heavy roughing at low speeds, problem applications where other carbides fail by chipping, and where cast alloys or high-speed steel wear rapidly.
- ✓ Excels in cutting tough materials such as aluminum, brass, bronze, cobalt, Hastalloy, high-speed steel, Inconel, molybdenum, Rene, stainless steel, super alloys, titanium, tungsten, Waspaloy, zirconium and more.



Falcon Abrasives

- ✓ For cutting thin wall tubing, sheet metal, fiberglass, and slotting applications.
- ✓ Reinforced with high strength woven fabric for maximum strength and resistance to shock.
- ✓ Manufactured from certified "stress proof materials to withstand the toughest grinding and cutting situations.
- ✓ Ultra-thin
- ✓ Chop saws
- ✓ Cutting discs
- ✓ Grinding stones



Sait AR24 Long Life Grinding Discs

- ✓ Highest quality virgin aluminum oxide grain assures consistent high stock removal for tough applications.
- ✓ All sizes are made with uniform grain throughout, no filler grain used in the backing.
- ✓ All wheels are internally reinforced with the highest quality fiberglass for maximum safety.



Ovation Flap Discs

- ✓ Heavy duty zirconium grain designed for high pressure applications.
- ✓ Durable polyester backing for reduced edge wear and long life.
- ✓ High density flap discs contain approximately 40% more material than conventional, regular density flap discs.



Iron Worker Chop Saw

- ✓ Wheels are constructed with the highest quality fiberglass to withstand the toughest applications.
- ✓ Specially formulated for use on low horsepower chop saw machines for fast cutting with minimal pressure.



SAIT A60S Cutting discs

- ✓ Unique, thin Type 27/Type 42 shape can be used on all angle grinders in accordance with ANSI B7.1
- ✓ Special aluminum oxide formulation offers the fastest cutting, longest lasting thin wheel.
- ✓ Externally reinforced with fiberglass layers to provide ultimate safety in a thin wheel.
- ✓ Proprietary bonding system allows for faster, burr free cuts.



SAIT 3A Flap Wheel

- ✓ Resin over resin construction for a strong bond that is resistant to heat and moisture.
- ✓ Closed coat structure for more material removal.
- ✓ High quality Egyptian cotton cloth backing provides superior durability.



Silicon Carbide Bench Wheels

- ✓ Extremely sharp grain for faster, burr-free cutting.
- ✓ Use on carbide tipped tools, cast iron.
- ✓ Vitrified bond for long life.



ELECTRICAL FITTINGS

Electrical Terminals

- ✓ Butt connectors
- ✓ Spade connectors
- ✓ Quick Slides
- ✓ Wire Connectors
- ✓ Ring Connectors
- ✓ Wire Pin Connectors
- ✓ Snap Plugs
- ✓ Available in different sizes
- ✓ With or without heat shrink
- ✓ Lug Terminals



Electrical Protection

- ✓ Heat Shrink
- ✓ Available in multiple sizes
- ✓ 6:1 shrink ratio
- ✓ Self-sealing, inner adhesive provides a watertight seal ideal for wet and corrosive locations and underground applications
- ✓ High strength – inner adhesive provides excellent strain relief and tensile shear strength
- ✓ Versatile – adheres to cable jackets and other non-oily surfaces
- ✓ Wide application range – five sizes cover 8 Ga. wire through 2000 MCM cable
- ✓ High dielectric strength up to 28,000V
- ✓ Easily fits over and seals large, bulky connections saving time and money
- ✓ Applications
 - ✓ Strain relief for plugs, connectors, flexible conduit and portable cords
 - ✓ Abrasion protection for exposed sensors, cables, cords, flexible conduit, hydraulic hoses and fittings, coaxial cable and connectors
 - ✓ Corrosion protection for hydraulic cylinders, conduit and exposed sensors
 - ✓ Dielectric protection for tools, coaxial cable and connections, capacitor connections, SCR and rectifiers and their leads, and buss bars



Tie Wraps

- ✓ Type 6/6 nylon – no metal tabs
- ✓ Non-corrosive
- ✓ Bent tip for ease of handling and installation
- ✓ Self-extinguishing – meets UL94V-2 flammability requirements
- ✓ Normal service temperature range: -40°F to +185°F (-40°C to +85°C)



HIGH STRENGTH FASTNERS

Our fasteners are designed for use in multiple areas of maintenance. Used in general maintenance and put to the test in heavy duty applications. All fasteners are available in stainless steel, metric and standard sizes and various grades.

Tuff-Torq Hex Nuts

- ✓ High-strength fine grain steel
- ✓ Three-stage heat treating
- ✓ Full finished nut dimensions
- ✓ Improved torque reliability
- ✓ Greater load consistency



Tuff-Torq Hex Cap Bolts

- ✓ Most versatile, best value for standard maintenance operations
- ✓ High-strength matched component fastening system
- ✓ Fatigue/vibration-resistant UNJ thread design
- ✓ 20% higher-than-normal wrenching surface for increased safety and even distribution of torque forces
- ✓ Heat-treated, quenched and tempered
- ✓ Perma Plated for superior corrosion protection
- ✓ Proprietary head marking for improved traceability
- ✓ Trailing thread does not enter the extrusion angle
- ✓ Increased length of chamfer allows easier alignment and assembly
- ✓ Minimum 150,000 PSI tensile strength
- ✓ Manufactured to meet or exceed Grade 8 strength requirements



Tru-Torq Washers

- ✓ Greater thickness with more closely held tolerances than standard washers – tight inside diameter tolerance prevents system mismatch.
- ✓ Smooth bearing surfaces.
- ✓ Hardened and tempered; will support 180,000 PSI minimum strength.
- ✓ Will not warp or lose tension.
- ✓ Retains basic strength under high temperatures.
- ✓ Precision heat-treated to eliminate brittleness.



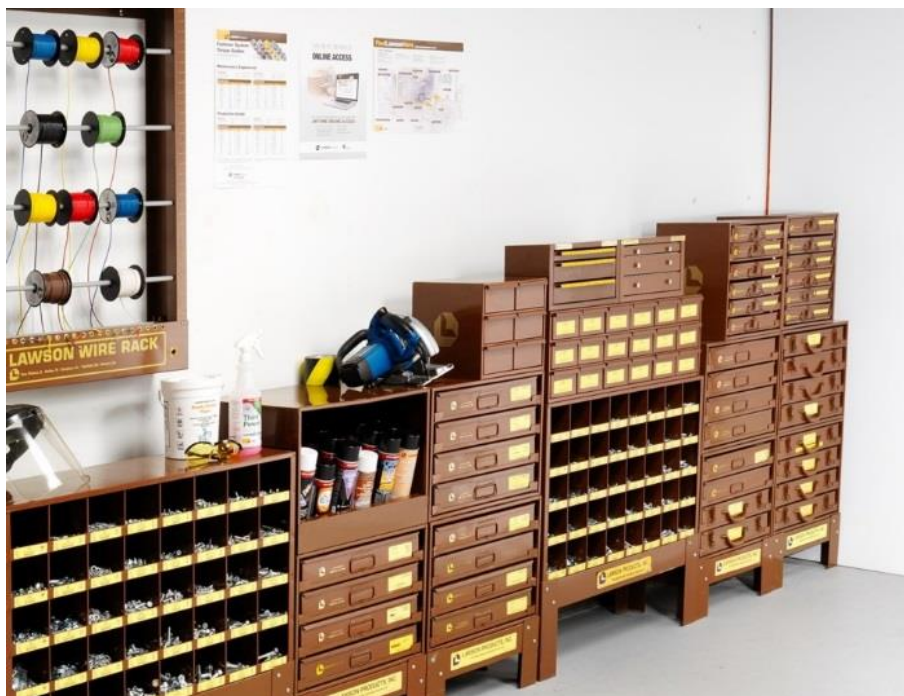
Body Hardware

- ✓ OEM hardware
- ✓ Various sizes
- ✓ Available in assortments



Assortments

- ✓ Storage for different fasteners, electrical fittings, retaining rings, grease fittings, body fasteners, etc.
- ✓ Heavy-duty steel construction
- ✓ 12" deep compartments for maximum storage
- ✓ Wide lip on each row keeps parts in their place
- ✓ Perfect for fastener inventory control and organization
- ✓ **Restocking service available island wide**



HOSES & FITTINGS

Our hoses and fittings come in multiple sizes and lengths. Hoses can be special ordered with or without fittings attached. We can supply everything you need to build your hoses in house.

Suction hoses

- ✓ Heavy-duty liquid suction hose used in construction dewatering, liquid wasted, cesspool cleaning, septic handling, agriculture applications and marine use.
- ✓ Lightweight and flexible. External helix provides for easy drag. Resistant to agricultural chemicals.



Discharge hoses

- ✓ Heavy-duty discharge.
- ✓ Easy storage.
- ✓ Tear resistant.



Kurt Hydraulic hoses

- ✓ High-pressure hydraulic hose features three-layer construction to ensure strength, flexibility, and proper pressure maintenance. They have flexible, hydraulic-oil-resistant inner cores, steel or fabric mesh reinforcement layers, and protective outer covers.
- ✓ Braided hydraulic hose.
- ✓ Spiral hydraulic hose.
- ✓ Thermoplastic hydraulic hose.
- ✓ Working temperatures range from -40°F to +250°F for standard hoses and -65°F to +450°F for specialty hoses.
- ✓ PTFE hose.
- ✓ Synthetic rubber hose.
- ✓ Nylon/Urethane hose.
- ✓ Neoprene hose.
- ✓ Nitrile hose.
- ✓ EPDM hose.
- ✓ Used in construction, industrial and manufacturing, agriculture, and many more.



Air hoses

- ✓ Red smooth neoprene
- ✓ Oil, grease, weather, and abrasion resistant.
- ✓ Spiraled for braided synthetic cords.
- ✓ Inner tube black nitrile, oil resistant and nonconductive.



Crimpers

- ✓ Heavy-Duty
- ✓ 60+ ton capacity
- ✓ Fully adjustable crimp settings
- ✓ 6-wire capability up to 2.75"
- ✓ Interchangeable dies



Fittings

- ✓ Hydraulic hose fittings
- ✓ Suction hose fittings
- ✓ Air hose fittings
- ✓ Cam locks
- ✓ Hose Clamps



TOOLS

We carry professional grade tools from the following:

Williams – Since 1882 Williams Hand Tools has met the harshest challenges of the most demanding industries.

CDI Torque Products – CDI manufactures and sells more professional-grade torque products than anyone in the world. CDI pioneered the development of digital torque measuring instruments.

Sioux – Starting with piston rings and spark plugs in 1914, Sioux has a long and proud heritage of innovation. In the 1920's Sioux revolutionized the tool industry by introducing some of the very firsthand held power tools.

Mayhew – Founded in 1856, Mayhew Steel Products is the oldest punch and chisel manufacturer in the US.

Knipex – Starting from a small German village in 1882 and now the world's leading specialists for professional pliers.

Williams Enclosed Head Ratchets

- ✓ Enclosed head is sealed to prevent dust, dirt, and liquids from entering head, preserving internal lubrication.
- ✓ Forged one-piece ratchet provides strength and safety for industrial applications.
- ✓ Smooth comfort-grip handle permits all-day use without gloves.
- ✓ 36 Tooth gear with 1 degree of engagement allows engagement in tight working areas.
- ✓ Nickel/chrome plating provides increase protection from rust and corrosion.
- ✓ Chrome finish models feature mirror-like exterior that can be easily cleaned after each use.
- ✓ Designed for tighter tolerances between pawl and gear which reduces metal fatigue and slippage under load.
- ✓ Does not require as many working parts, reducing possible breakage and parts to repair.
- ✓ Easy access reverse lever allows user to change working direction quickly and easily with only one hand.
- ✓ Available in 1/4, 3/8, 1/2 and 3/4.



Williams Screw drivers

- ✓ Comfort-grip handle with thumb stop allow for added turning power without discomfort or slippage.
- ✓ Chrome blades prevent corrosion and can be easily cleaned.
- ✓ Blades are made from special alloy steel for extra strength.
- ✓ Vapor-blasted tips grip fasteners and prevent chipping, extending tool life.
- ✓ Hex bolsters on shafts allow a wrench to be used for extra turning power.



Williams Supercombo Wrenches

- ✓ SUPERCOMBO open end has specially designed grooves that direct wrench force away from fastener corners.
- ✓ Instead, wrenching forces are placed on the flat surfaces behind the points.
- ✓ Ratcheting gear features up to 80 teeth, minimizing swing arc in tight spaces.
- ✓ Manufactured from special alloy steel, precision forged, and heat treated for optimum strength and durability.
- ✓ Longer length, wrench handle is sized for optimum comfort and balance, providing increased leverage, especially in tight spaces.



Williams Supertorque Impact Sockets

- ✓ Lobular openings for greater turning power without deforming the fastener.
- ✓ Designed for maximum engagement on fasteners.
- ✓ Suitable for use with pneumatic and electric impact wrenches.
- ✓ Specially heat treated for impact use to provide long life, safety, and durability.



CDI Torque Wrenches

- ✓ Metal handle series offers user a rugged, industrial strength torque wrench able to withstand the rigors of professional use.
- ✓ Handles are knurled for tough non-slip grip.
- ✓ Dual scale calibrated dual direction.
- ✓ Positive lock with spring-loaded pull-down lock ring.
- ✓ Fast, accurate, and easy to set.
- ✓ Easy to read laser marked scales.



Knipex Cobra Pliers

- ✓ Modern high performance water pump pliers.
- ✓ One-handed operation thanks to automatically closing spring which is activated at the touch of a button.
- ✓ 25-fold fine adjustment for fast adjustment to different size components.
- ✓ Self-locking on pipes and nuts.
- ✓ Large grip and light weight.
- ✓ Grips flat, round, and angled components.
- ✓ Sits firmly in hand thanks to non-slip handles.
- ✓ Available in different sizes.



Knipex Pliers Wrench

- ✓ Replaces the need for sets of metric and imperial spanners.
- ✓ Smooth jaws for damaged free installation of plated fittings – working directed on chrome.
- ✓ Excellent for gripping, holding, pressing, and bending work pieces.
- ✓ Zero backlash jaw pressure prevents damage to edges of sensitive components.
- ✓ Fast adjustment by pushing a button directly on the workpiece.
- ✓ Parallel jaws give more solid grip.
- ✓ Ratchet type principle allows quick and easy tightening and release on bolted connections.



Knipex High Leverage Diagonal Cutter

- ✓ For very tough, continuous use.
- ✓ High cutting performance with minimum effort.
- ✓ Precision cutting edges additionally induction-hardened for all sorts of wire including piano wire.
- ✓ Sits firmly in hand thanks to ergonomic handle design and non-slip coating.
- ✓ Light weight with long service life.



Knipex Needle Nose Cutting Pliers

- ✓ For assembly, alignment, and gripping work.
- ✓ Very long, pointed flat rounded jaws.
- ✓ Cutting edges with bite type cut for soft, medium-hard, and hard wire.
- ✓ Forged from vanadium electric steel and oil hardened.



Knipex Automatic Insulation Stripper

- ✓ Strips cables with standard materials without any need for manual adjustment.
- ✓ Fine adjustable zero correction of the blade setting to special material requirements.
- ✓ Compact, hand and lightweight tools for common cable cross-sections and insulating materials.
- ✓ Narrow head style for use in confined areas.
- ✓ Made of fiber reinforced plastic.
- ✓ Blade made of oil-hardened special tool settle.
- ✓ Blade can be easily replaced.



Knipex Precision Circlip Pliers

- ✓ Heavy duty in continuous operation – up to 10 times longer service life compared to turn tips.
- ✓ Bolted joint – precise, zero backlash operation of pliers.
- ✓ Non-slip plastic coating on handles
- ✓ Chrome vanadium electric steel, forged, oil hardened.
- ✓ Available for internal and external clips.



Knipex High Leverage Combination Pliers

- ✓ 35% less effort required than with conventional combination pliers.
- ✓ Cutting edges for heavy duty applications.
- ✓ Easier cutting, powerful gripping, bending, and pulling.
- ✓ Long cutting edges for thicker cables.
- ✓ Gripping zones for flat and round material.
- ✓ High-grade special tool steel forged and multi-stage oil-hardened.



Knipex Long Reach Needle Nose Pliers

- ✓ For gripping, adjustment and assembly work in hard-to-reach areas thanks to slim, very long design.
- ✓ Deep down situated parts can be easily reached using slim, half-round tips.
- ✓ Careful yet reliable gripping, holding, and guiding of small copper pipes, screws, and cables as well as other round parts thanks to milled grooves with smooth surfaces.
- ✓ Serrated pipe grip to grip round parts.
- ✓ Slim yet robust tool.
- ✓ Available in 45°.



Mayhew Dominator Prybars

- ✓ Patented, two-composite handle is ergonomically designed, providing superior comfort and grip.
- ✓ Hardened, tempered-steel shaft runs from the cutting edge through the handle, delivering maximum durability and prying power.
- ✓ Capped end is in direct contact with the shaft and allows the user to strike the tool without damaging the handle.



Mayhew Dominator Scrapers

- ✓ Used for a multitude of applications, such as removing gaskets, rust, paint, carbon buildup, and floor tile.
- ✓ Blades are ground for a sharp edge and can be resharpened after heavy use to return the cutting edge to its original sharpness.
- ✓ Capped end allows for striking without damaging the handle.
- ✓ The patented, two-composite handle is ergonomically designed, providing superior comfort & grip.
- ✓ Hardened and tempered alloy steel that is black oxide finish for additional rust protection.
- ✓ Made in the USA.
- ✓ Blade is offset for hand clearance and better scraping force in hard-to-reach places.



Mayhew Punch and Chisels

- ✓ Feature many sizes and lengths of punches and chisels to fit the correct application.
- ✓ Quality, dependability, and confidence.
- ✓ Heat treated for maximum strength.
- ✓ Black oxide finish
- ✓ Made in the USA.



Mayhew Pro Hose Clamp Pliers

- ✓ Used to loosen and remove automotive hose clamps
- ✓ Long flexible cable allows for use in tight spaces
- ✓ Spring loaded ratchet has multiple stops for less strain on user



Mayhew Screw Extractors

- ✓ For removing broken or seized screws
- ✓ Hardened steel edges allow for easy screw removal
- ✓ Fluted edges cut into screw shaft to remove screw.
- ✓ Bolt and drill bit sizes marked on extractor for correct sizing
- ✓ Made in the USA



Sioux Impact Guns

- ✓ Variety of configurations to fit specific needs.
- ✓ Manufactured from high quality materials.
- ✓ Utilizing the most advanced motor and clutch designs
- ✓ Twin hammer pin or roller cam impact mechanisms.
- ✓ Inline, pistol grip or D handle configurations.
- ✓ Pin, friction ring, quick change, or thru hole socket retainers.
- ✓ Standard or extended anvils.



Sioux Air Hammer

- ✓ Spring retainer
- ✓ Built-in air regulator
- ✓ Hardened steel barrel and piston
- ✓ Aluminum housing
- ✓ 3200 blows per minute



WELDING SUPPLIES

Welding Rods

707 Dissimilar Steel Stick Rod

- ✓ All-position alloys for joining dissimilar steels – provides high-strength, crack-free welds on all combinations of weldable steel.
- ✓ Takes the guesswork out of alloy selection – can be used on ANY weldable steel
- ✓ High strength and elongation provide strong, crack-free welds
- ✓ Smooth, quiet arc, easy slag release
- ✓ Tensile Strength: 120,000 PSI
- ✓ Yield Strength: Up to 96,000 PSI
- ✓ Elongation: 20%
- ✓ Hardness: Rc 20-23
- ✓ Polarity: AC or DC



706 Multi-purpose Hard Facing Stick Rod

- ✓ Alloys for repairs and buildup prior to overlaying with more abrasion-resistant hardfacing.
- ✓ Versatile – easy to use on all steels
- ✓ Resists cracking
- ✓ Increased deposition rates save time and money
- ✓ Work hardens under impact
- ✓ Buildup for hardfacing, joining manganese, carbon steels and stainless steels
- ✓ Tensile Strength: 101,000 PSI
- ✓ Elongation: 34%
- ✓ Hardness: Rc 45, work-hardened
- ✓ Polarity: AC or DC Reverse
- ✓ CANNOT BE TORCH CUT

704 Mild and Carbon Steel Stick Rod

- ✓ Maintenance engineered, all-position, high-strength, hydrogen-controlled electrodes, and wires for difficult weldments of low carbon, low alloy and cast steels.
- ✓ Superior Advantages
- ✓ Versatile – joins a wide variety of carbon and low alloy steels, can be used in all positions.
- ✓ Strong – produces tough welds with high impact strength and elongation.
- ✓ Tensile Strength: 101,000 PSI
- ✓ Yield Strength: 85,000 PSI
- ✓ Elongation: 28%
- ✓ Polarity: DC Reverse
- ✓ Low Hydrogen electrode for welding high strength steels in the 80 to 90 KSI tensile range such as T-1, Hy80, cast steels, construction grades, buckets, and loaders.

510 Aluminum Stick Rod

- ✓ Highly versatile alloys for all weldable types of aluminum including sheet, forgings, extrusions and castings.
- ✓ Superior Advantages
- ✓ Stable, quiet arc with no undercutting
- ✓ Good corrosion resistance
- ✓ Tensile Strength: 35,000 PSI.

Solder

- ✓ Acid core
- ✓ Rosin core
- ✓ Solid
- ✓ Available in rolls or coil tubs



Welding Accessories

- ✓ Ground clamps – 300amp & 500 amp
- ✓ Welding rod holders – 200amp & 300 amp
- ✓ Gloves
- ✓ Eye protection
- ✓ Chipping hammers
- ✓ Wire brushes
- ✓ Cable connectors
- ✓ Welding hose & cables



SUPPLIERS

